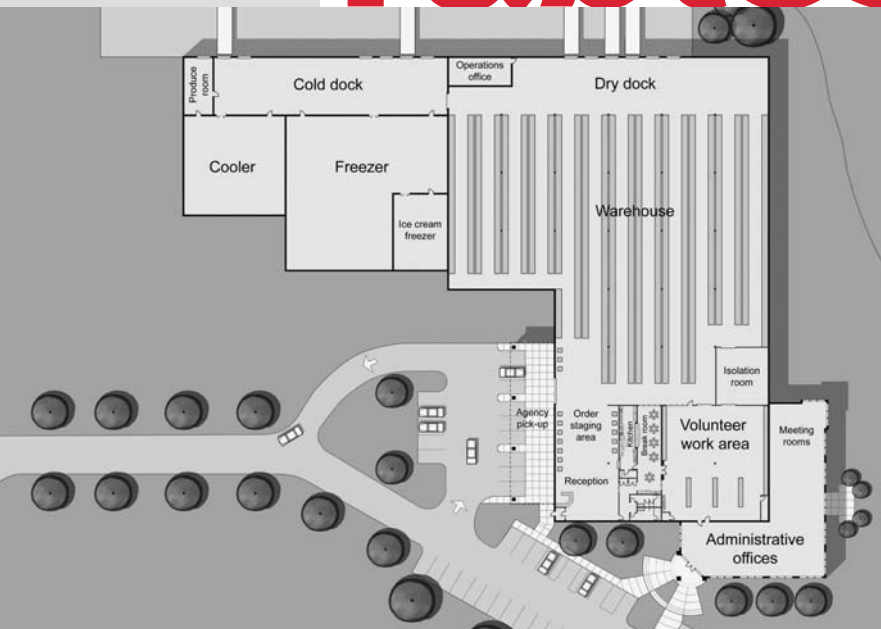


Tablesetter

A NEWSLETTER FOR FRIENDS OF THE ST. LOUIS AREA FOODBANK



NEW BEGINNINGS... NEW OPPORTUNITIES TO SERVE

By the time you read this, the St. Louis Area Foodbank will have completed its move to its new location at 70 Corporate Woods Drive, in the Earth City Business District. At this new site, we stand at the threshold of new opportunities to serve those in need in our bi-state region. The possibilities are exciting!

INCREASED STORAGE CAPACITY OF SHELF-STABLE

ITEMS: At our former site, we not only had half as much floor storage space, we also had much lower ceilings. As a result, we could only stack a maximum of 2 pallets high – now, we will be able to stack as much as 4 pallets high. Our cubic storage space essentially has tripled. What does this mean in terms of our mission? It means that we now have the ability to accept large-scale food donations in their entirety, which will translate into a better ability to offer our member agencies and their clients, diverse, nutritional food offerings.

INCREASED COLD STORAGE SPACE: Our cooler/freezer space will now be 25,000 square feet – 10 times larger than our previous space. We no longer will need to pay for outside cold storage. Nor, will we have to turn away perishable items such as eggs or poultry – items that are nutrient-rich and desperately needed by the people we serve.

INCREASED DOCK SPACE: The St. Louis Avenue site had just one delivery dock – through which both shelf-stable and perishable items had to come, often causing a distribution bottleneck for arriving donations,

member agency pick-ups, and our own truck distributions to agencies. The new facility came already equipped with 13 docks – 7 cold and 6 dry.

INCREASED ACCOMMODATIONS FOR VOLUNTEERS

AND COMMUNITY OUTREACH: Our new facility will better accommodate large volunteer groups through an expanded sorting area. We also have a demonstration kitchen for nutrition education, and meeting rooms for Community Outreach & Agency Services. We also are making plans for new or expanded outreach programs that will better serve our most needy clients.

INCREASED ACCESS: There's a reason that UPS, DHL & FedEx all have located their regional hubs in Earth City – easy highway accessibility. And now, we are easier for our member agencies and our donors to reach, and we will be more efficient in our food deliveries, as well.

All of these increases add up to many more opportunities to feed hungry people and to educate the public about the problems of hunger. Thank you for your continued support, which has made this growth possible.

♥ ST. LOUIS AREA
FOODBANK MEMBER
AGENCIES ARRIVE
ON THE FIRST DAY
OF DISTRIBUTION



LETTER FROM THE DIRECTOR



LOCATION

70 CORPORATE WOODS DRIVE
ST. LOUIS, MO 63044
314.292.6262
www.stlfoodbank.org

BOARD OF DIRECTORS OFFICERS

John Van Gels,
President

The Boeing Company

Buck Fetters,
Exec. Vice-President
HR Consultant

Michael Tierney,
Vice-President
Attorney at Law

Mary Cronin Doyle,
Vice-President
WellPoint

Timothy Hayden,
Treasurer
Summit Strategies Group

Gerald Schmid,
Secretary
The Young Group

DIRECTORS

Jason Arnold
Vin de Set

Rick Bosworth
ReproMAX

R. David Bray
*U.S. Bank
Private Client Group*

Keely Fimbres
St. Louis Rams

Sean Fitzgerald
Enterprise Rent-A-Car

Ron Gorgen
Edward Jones

Mike Jones
UPS

Christopher J.
McDonough
ARAMARK Corporation

Lori Shaw
Community Volunteer

Andree Wallgren
Maritz, Inc.

Ja'Ethel B. Williams
Emerson

EXECUTIVE DIRECTOR

Frank Finnegan

IN PACKING FOR OUR RECENT MOVE, WE CAME ACROSS MANY THINGS LONG FORGOTTEN ABOUT. THE LETTER BELOW IS ONE OF THOSE VERY THINGS. IT FIRST APPEARED IN THE FOODBANK NEWSLETTER IN 1997. NOW THAT WE HAVE COMPLETED THE MOVE, AND OUR OFFICES ARE SPREAD OUT, WE NO LONGER WORK ON TOP OF ONE ANOTHER – AND YET, MANY THINGS REMAIN THE SAME.

As I sit at my desk it's not uncommon to hear someone raise their voice in the office. In fact at times people are almost screaming at each other. Sheila, our order clerk often yells on the phone. I can hear her yelling now, "Apples, I said apples. IT'S A BAG OF APPLES" and then she smiles. She is taking an order from one of our member agencies and trying to offer them a bushel of apples. The person on the other end of the line is in his seventies, with hearing that isn't what it used to be. Now he volunteers with his church food pantry and part of his weekly duties include calling the Foodbank to yell and be yelled at by Sheila.

Behind me on the right sits Lenora who meets the volunteers as they pick up their orders placed with Sheila. Lenora makes sure each volunteer receives a complete order and signs an invoice so we can track our distribution. The tracking is important because it assures our food donors that product is going only to those in need. But for the volunteers it's not the paperwork that's important.

The vast majority of our volunteers are senior citizens. They have lived their lives completing the paperwork. They have raised children fretting over homework, book reports and report cards. They have worked in offices completing daily, weekly and monthly reports. They have learned that although the paperwork has to be done, in the end it is simply paperwork.

Now in their twilight years they concentrate on more important matters. I overhear parts of discussions that Lenora and Sheila have with them. They talk about their grandchildren and the children of the families that come to their food pantry. They talk about their adult sons and daughters, as well as the woman with two kids who came to them because she had been downsized out of a job. Although their hearing may not be as good as it once was, they hear what's important. They hear the pain of those having to ask for help and they know the meaning of life is not found in the paperwork but in the effort of helping others.

Just after signing the paperwork and loading their vehicle they think once more of what's important, about who will be coming to their food pantry next week. And they yell at us one more time. "God Bless you," they say. And then a little louder as they lean in for the answer "Will you have apples next week?"

MUCH HAS CHANGED IN THE 10 YEARS SINCE THAT LETTER WAS INITIALLY WRITTEN – SHEILA HAS SINCE LEFT THE FOODBANK FOR A JOB IN HER HOMETOWN AND LENORA IS NOW OUR DIRECTOR OF PRODUCT SOURCING. BUT, WHILE WE STILL COMPLETE THE PAPERWORK, WE CONTINUE ON IN OUR MISSION KNOWING THE MEANING OF OUR WORK IS FOUND IN THE EFFORT OF HELPING OTHERS.

SINCERELY,

FRANK FINNEGAN
EXECUTIVE DIRECTOR

**THIS INSTITUTION IS AN EQUAL
OPPORTUNITY PROVIDER.**



A United Way Member



HELPING HANDS

› IRON FORK WRAP-UP

THE RIVERFRONT TIMES IRON FORK COMPETITION HELD ON APRIL 5 AT THE RITZ-CARLTON FEATURED 30 OF ST. LOUIS' BEST RESTAURANTS. MORE THAN 1,200 ATTENDEES SAMPLED SIGNATURE DISHES AND HELPED RAISE \$7,500 FOR THE FOODBANK.



CHRISTMAS IN JULY

KEZK 102.5 and the Dave Mungenast Automotive Family have teamed up to support the St. Louis Area Foodbank throughout the month of July by sponsoring a "Christmas in July" online food drive. Summer is a time when, because of summer break and family vacations, food donations tend to decrease – while at the same time, food needs tend to increase. Listeners are encouraged throughout the month to make financial donations to the St. Louis Area Foodbank through our "Virtual Food Drive" program. Go to www.kezk.com to donate much-needed items with your donation.

HUNGER ADVOCACY DAY

The St. Louis Area Foodbank joined other Missouri food banks in Jefferson City on Wednesday, March 28, 2007, for Hunger Advocacy Day. The focus of the day was to inform legislators about the hunger issues in our area and advocate for favorable policies on behalf of the hungry. Twenty-one people from the St. Louis Area Foodbank and its member agencies boarded the bus at 7 a.m. to make the trip. Packets of information were given to each person making the trip, who then distributed them to the appropriate legislator, along with food distribution facts about the legislator's own district.

Senator Rod Jetton spoke with all of the food banks attending about pending legislation that would directly affect the people we serve. These bills are as follows:

- House Bill 453 would authorize an income tax credit for donations to food pantries
- House Bill 454 would authorize the Family Support Division to assist certain elderly individuals who qualify for the federal Food Stamp Program in obtaining supplemental food stamps.

We are pleased to announce that House Bill 453 has passed the House and the Senate and has been signed into law by the Governor. House Bill 454 has passed the House and is now in the Senate. If you haven't already contacted your Senator regarding House Bill 454, we encourage you to do so. If you're uncertain about which Senator represents you, visit http://www.senate.mo.gov/lookup/leg_lookup.aspx.

Thanks to all the agencies that made the trip and helped to improve awareness of hunger in our state.

ST. LOUIS AREA FOODBANK RECEIVES COVETED 4-STAR RATING FROM CHARITY NAVIGATOR FOR 3RD CONSECUTIVE YEAR

Charity Navigator, America's premier independent charity evaluator, works to advance a more efficient and responsive philanthropic marketplace by evaluating the financial health

of America's largest charities. Recently we received a letter from their executive director, Trent Stamp that stated, "We are proud to announce St. Louis Area Foodbank has earned

our 4-star rating for its ability to efficiently manage and grow its finances. Only 12% of the charities we've rated have received at least two consecutive 4-star evaluations, indicating that

St. Louis Area Foodbank outperforms most charities in America in its efforts to operate in the most fiscally responsible way possible. The 'exceptional' designation from

Charity Navigator differentiates St. Louis Area Foodbank from its peers and demonstrates to the public it is worthy of their trust."

IN YOUR BACKYARD

JERSEYVILLE FOOD PANTRY

720 State Hwy 16
Jerseyville, IL 62052

THE ST. LOUIS AREA FOODBANK SERVES MORE THAN 500 MEMBER AGENCIES IN 26 COUNTIES IN MISSOURI AND ILLINOIS. IN FACT, ONE OF OUR MEMBER AGENCIES PROBABLY IS SERVING PEOPLE RIGHT IN YOUR OWN 'BACKYARD.' THIS ISSUE, WE'RE HIGHLIGHTING A MEMBER FROM THE ILLINOIS SIDE OF THE MISSISSIPPI.

THE JERSEYVILLE FOOD PANTRY has operated officially since 1977, although the town assisted people in need with sporadic truckloads of commodities – such as cheese – before that.

The Pantry serves all of Jersey County, which includes the cities of Jerseyville, Grafton, Fieldon, and Brighton. It is open Monday, Wednesday and Friday of each week from 11 a.m. to 2 p.m., and assists 75-80 households each month. Individuals in need can obtain food once a month from the Pantry. Food recipients include the elderly, families with young children, and the working poor. Most recipients either do not receive very much in food stamps or do not get them at all.

The Pantry primarily receives USDA commodities, which are delivered to their site by the St. Louis Area Foodbank. The Foodbank also recently held a food fair at the pantry, bringing pallets of salvage product to provide additional assistance to the pantry's neediest clients.

"The food that we receive from the Foodbank makes up at least 75 percent of what we give out," says Sarah Collins, executive director of the Jerseyville Food Pantry. "We purchase some things from local grocery stores, and one of them gives us their day-old bakery items. We also receive some private donations."

"Our food pantry, with the assistance of the Foodbank, helps a lot of people in

our county obtain a little extra food that in many cases allows them to purchase other necessities," Collins notes. "There is another food pantry in our town, but individuals who receive any food stamps cannot receive their product. Sometimes food stamps do not cover a family's needs. Our food pantry helps supplement their food stamps or their food budget."



▲ THE ST. LOUIS AREA FOODBANK RECENTLY HOSTED A BULK DISTRIBUTION OF FOOD ITEMS AT THE JERSEYVILLE FOOD PANTRY TO PROVIDE ADDITIONAL HELP TO THEIR NEEDEST CLIENTS.

When you help the St. Louis Area Foodbank, you're helping our member agencies, such as the Jerseyville Food Pantry, help people in need in the local communities where they live. Without the Foodbank, many of these members would not have the means to access available food.

IN THE BANK

Here are the results of recent food drives (IN POUNDS OF FOOD)

Saint Louis University
408

Commerce Bank
1,145

Canstruction **36,339**

AFTRA **1,631**

Dragonking Games
250

Allied College **523**

Express Scripts **2,110**

Shop-N-Save **288**

Fontbonne College
278

University of Missouri
– St. Louis **396**

Parkway School
District **9,851**

National Association
of Letter Carriers
Food Drive **220,000**

Washington
University **196**

Chipotle Restaurants
1,829

HELPING HANDS

GIANT STEPS STUDENTS WITH AUTISM VOLUNTEER AT FOODBANK

"Young people with disabilities enjoy the opportunity to help others," Giant Steps Director, Betty Berger, observes. Berger is standing in the packing area at the Earth City facility of the St. Louis Area Foodbank. All around her, young people with autism are efficiently packing canned and packaged food into cartons for clients of the St. Louis Area Foodbank. "Today they packed 440 cartons of food and they are still eager to work!"

VOLUNTEER CORNER: WE NEED WEEKDAY WARRIORS!

In terms of volunteers, the Foodbank's biggest need is getting volunteers to help on weekdays. We have shifts available at 9 a.m.-12 p.m., 1 p.m.-4 p.m. every weekday, with an additional 4 p.m.-7 p.m. shift on Tuesdays.

The volume of our donated food has increased by more than two and one-half times since last year at this time, so the Foodbank's volunteer needs have greatly increased. Groups are the most helpful, but of course, it all gets done one volunteer at a time. If you can help, please contact Brett at (314) 292.5397.

The Foodbank welcomes the Giant Steps Students as volunteers whenever they are available. Giant Steps provides an academic education, along with life skills to prepare students with autism for a vocation.

"People with autism often are characterized as aloof, disinterested or withdrawn," says Berger. "But, when given the opportunity, these children are happiest when they are busy and engaged. The St. Louis Area Foodbank furthers our efforts by giving these children a place in the community to be of service to others."

"The kids from Giant Steps spend their time at the Foodbank preparing food boxes for a program that helps feed more than 4,000 low-income seniors each month," notes Frank Finnegan, executive director for the St. Louis Area Foodbank. "The children do an outstanding job and hopefully, this partnership benefits them as much as it's helping others."

There is no special set of requirements to help out at the St. Louis Area Foodbank beyond a willingness to give of your time and energy. Volunteers, like the students from Giant Steps, are essential to getting food to those who need it as cost-effectively as possible. The Foodbank is grateful for their service.

JUNE 5 HUNGER AWARENESS DAY

REPRESENTATIVES OF THE 500 FOODBANK MEMBER AGENCIES WERE INVITED TO TOUR OUR NEW FACILITIES DURING A JUNE 5 – HUNGER AWARENESS DAY – OPEN HOUSE. THEY SAW FIRSTHAND THE OPPORTUNITIES THE NEW FACILITY OFFERS TO BETTER SERVE THEIR NEEDS.



REPRESENTATIVES FROM THE ST. NICHOLAS FOOD PANTRY WITH THE VERY FIRST ITEMS DISTRIBUTED FROM THE NEW LOCATION.



REPRESENTATIVES FROM THE LUTHERAN FAMILY AND CHILD FOOD PANTRY IN ILLINOIS LOAD THEIR FIRST-EVER ORDER FROM THE NEW FACILITY.

THE FACE OF HUNGER



WHAT DOES THE "FACE OF HUNGER" IN YOUR COMMUNITY LOOK LIKE? WHAT DO YOU IMAGINE IN YOUR MIND WHEN YOU THINK ABOUT PEOPLE WHO NEED FOOD? ARE THEY YOUNG? OLD? MEN? WOMEN? DO YOU PERSONALLY KNOW A FAMILY WHOSE FINANCIAL RESOURCES MAY HAVE BEEN TAPPED TO THE LIMIT AND BEYOND?

FOLLOWING IS A BRIEF SKETCH OF A REAL PERSON WHO HAS BEEN HELPED BY ONE OF OUR MEMBER AGENCIES. IT PROVIDES A GLIMPSE OF THE FACE OF HUNGER IN OUR COMMUNITY.

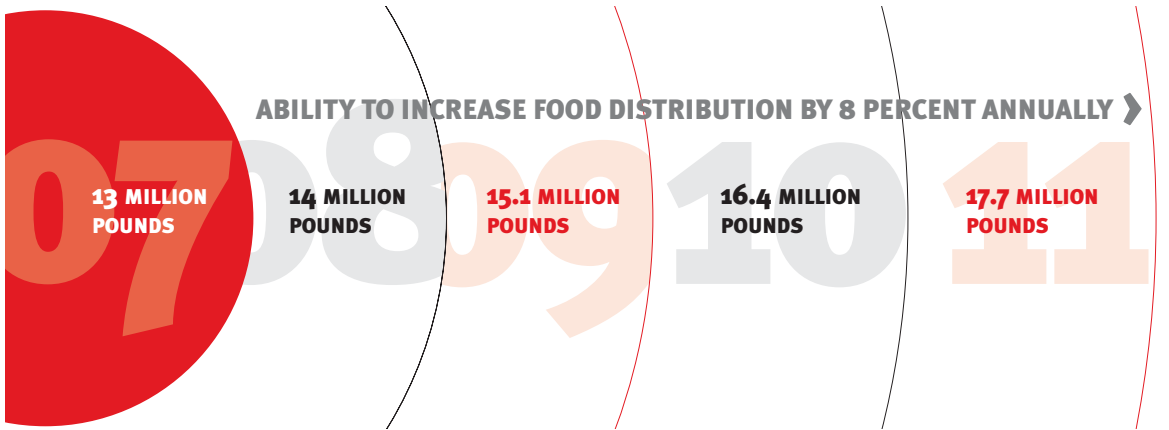
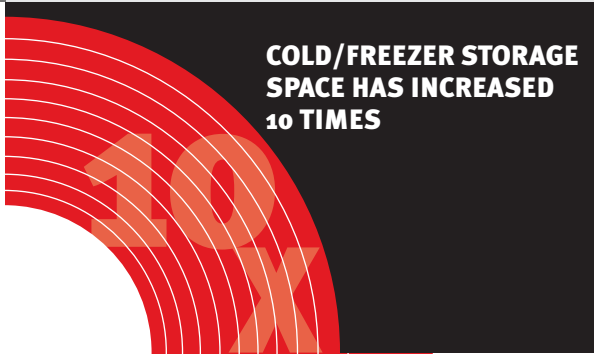
MARCIA IS A 42-YEAR-OLD who lives with her eight-year-old son and 89-year-old father who suffers from dementia. In need of 24-hour care, Marcia has left her job in order to care for him. To make ends meet, Marcia has needed to stop taking some of her medication, and has missed some utility payments. She also has skipped some meals so that there is enough food for her father and son.

Marcia receives food from Feed My People – a St. Louis Area Foodbank member agency, and loves that she can come twice a month for assistance, which she says really helps make sure there always is some food in the house.

NEW FACILITY OFFERS SPACE TO GROW

THE NEW HOME OF THE ST. LOUIS AREA FOODBANK IS BURSTING WITH POSSIBILITIES AND THE SPACE TO ACCOMPLISH THEM!

WE LOOK FORWARD TO ACCEPTING INCREASING AMOUNTS OF FOOD DONATIONS OF ALL KINDS, WHICH WILL TRANSLATE INTO MORE FOOD RESOURCES TO HELP PEOPLE IN NEED THROUGHOUT THE BI-STATE REGION.



REPLACED ONE DELIVERY DOCK WITH 13 – 7 COLD AND 6 DRY



FEED HUNGRY PEOPLE BY ACQUIRING AND DISTRIBUTING FOOD THROUGH OUR MEMBER AGENCIES, AND EDUCATE THE PUBLIC ABOUT THE NATURE OF AND THE SOLUTIONS TO THE PROBLEMS OF HUNGER.

